



Saint Pius X Catholic School

Re-opening Campus Plan

2020-2021

Mission Statement

Saint Pius X School fosters the Catholic commitment to know, love and serve the Lord as reflected in our parish motto, "Love One Another". Our mission is to recognize the value of each student and to challenge the individual to be a responsible, self-disciplined, lifelong learner in the service of the church and society.

Saint Pius X Catholic School

Protocols/Safety Procedures for the 2020-21 School Year

Saint Pius X Catholic School is taking the following precautionary measures to ensure the safety and health of the students, faculty and staff on our campus for the 2020-21 school year. These precautions and guidelines are in conjunction with the recommendations and directives established by the state, county and city government, the Diocese and CSO, TEA and Center of Disease Control. We will continue to stay in compliance with all of these entities and adjust our plan in accordance with the most current directives/guidelines documented and addressed by the above said entities.

As this re-opening plan is published now, future orders from the state or local authorities could add additional restrictions. SPX intends to fully voluntarily comply with any order or request that benefit the health and safety of our community. Especially in regards to children of Saint Pius X Catholic School.

SPX will be offering face to face and distance learning for our students in the 20-21 school year. Parents will have the option to choose which best fits your family's needs. Please be aware that parents will be asked to make a choice of either option. The option chosen will be based on each quarter. Meaning, if you choose Distance learning for the first quarter, your child will remain in distance learning the entire first quarter and will not be able to attend face to face/in person during that quarter. IF a parent should want to change their learning options for the next quarter, a written request must be submitted to the school office at least two weeks prior to the current quarter ending. If a family chooses distance learning, students will not be allowed to participate in any in person/on campus extra-curricular programs.

A specific document will be sent out at a later date for selection of choice that will be submitted to the school office.

As a Catholic community, our Catholic identity and spiritual growth remains a priority in the education of our children at Saint Pius X Catholic School. Each day, our students and staff will continue to focus on our virtue, prayer and saint of the month in our daily reflections and announcements. Our faith and love for one another will preserve and serve as a solid foundation for us all. This foundation will be the base in which we stand to continue the academic, emotional, and spiritual education for our children in the coming school year. As we continue to navigate through different times, we are reminded that God is still in control while keeping the faith that we will all get through this together.

In this document, you will find information on how SPX will address the following:

- Cleaning, Sanitizing and Disinfecting
- Classroom Instruction/Learning Platforms
- Health/Hygiene
- Daily Operations
- General Information
- COVID-19 Information

Cleaning, Sanitizing and Disinfecting

Area / Rooms	Frequency during day	Nightly
Classrooms/Office Area High traffic touched areas	Beginning of each new day; at least 3-4 times during school hours	Misting sanitization machine
Common Areas-front foyer; stairwells	Scheduled times throughout the day	Misting sanitization machine
Restrooms	Scheduled times throughout the day	Complete disinfecting cleaning; misting machine
Hallways	Scheduled times throughout the day	Thorough mopping; disinfecting; misting machine
Gym	Scheduled times throughout the day	Complete disinfecting cleaning; misting machine
Cafeteria/foyer	After each use daily	Complete mopping; sanitizing/disinfecting; misting machine
Library	After each use daily	Disinfecting/sanitization cleaning; misting machine
Computer Lab, keyboards, smart boards, copier machine	After each use daily and at the end of each day	Disinfecting/sanitation cleaning; misting machine
Playgrounds	Daily	Misting machine

- The SPX Maintenance/Custodial Crew will have a complete daily/nightly/weekly schedule that will be followed to ensure the safety and health of all. A deep cleaning approach in all areas will be conducted NIGHTLY.
- Hand sanitizer stations will be accessible in all classrooms and common areas.
- Cleaning sprays and wipes will be available in all classrooms and common areas.

- Additional hand sanitizer and soap machines have been installed throughout the school.
- All staff/personnel will be trained on all COVID-19 safety protocols and compliances.
- Staff/Faculty will be provided cleaning supplies to clean touch point surfaces throughout the day.
- Students/Staff will have scheduled times to wash hands during the day in addition to before and after lunch/recess periods.

Classroom Instruction/Learning Platforms

- PreK-5th Grade will be self-contained.
- 6-8 Grade will be departmentalized; with spaced transition times between classes to minimize hallway congestion.
- Each classroom has space to ensure physical distancing minimums of 36 ft.² for each student.
- Windows will be opened to allow natural air, weather permitting.
- Students will have their own individual supplies in containers. There will be NO shared supplies.
- Physical education for all students will be outside, weather permitting. When in the gym, only one class at a time will attend PE. Cleanings between each class.
- PreK-3: Art & Library teachers will travel to homerooms.
- 4-8 grade will attend Art/Library classes at designated times. Cleaning between each class.
- Computer Lab will be utilized by K-8th grade; however, a limited schedule with cleanings between class visits will be conducted.
- 5-8 grade will attend Spanish classes. Cleaning between each class.
- Weather permitting; staff/faculty may also utilize outdoor areas within the school grounds perimeters conducive for instruction.
- Learning Platform:
 - Face to Face
 - SEESAW-PreK-3
 - Microsoft Teams 4-8 grade
 - SEESAW-PreK-3
 - Microsoft Teams 4-8
 - ZOOM/Video or Webinar based instruction/lessons
 - RENWEB/FACTS will still be utilized for Grades/Homework, Communications and Family/tuition information

Health and Hygiene

- Students/Staff/Faculty in all grades (PK – 8th) will be required to wear nonmedical grade face masks at all times, including recess and PE, **IF** social distancing of 6 feet cannot be controlled.
- All essential visitors are required to wear mask.
- Additional hand sanitizing dispensers will be mounted throughout the school campus.
- Each classroom will have hand sanitizer pump stations that each child/adult will use before entering the classroom.
- Students will wash/sanitize their hands upon entering the building and hand wash frequently throughout the day (designated handwashing times are built into the daily schedule).
- A staff member using a laser thermometer during morning arrival – before exiting the car, will screen all students for their temperature.
- Tardy / late students – parents must escort student(s) to the main school entrance where students will have temperature check before entering the building with the parent present.
- Teachers / staff will self-screen for COVID-19 symptoms before arriving onto campus each day.
- Teachers / staff will sanitize hands upon entering building/classrooms.

Daily Operations

- School Hours
 - The school will open at 7:25am for arrival.
 - Tardy bell will ring at 7:50am
 - Dismissal will begin at 3:15pm
- Morning Arrival
 - Student will be screened for their temperature by staff members using a laser thermometer during morning arrival – before exiting the car.
 - Student will report directly to their homeroom class.
 - Handwashing/sanitizing will be done upon entering the classroom.
 - Tardy / late students (7:50am or later)– parents will park in front parking lot and walk the student(s) to the main school entrance where students will then have temperature check before entering the building.
 - **If a student is denied access into the building during arrival time, this does not mean the child/family has COVID-19, it simply means the student (s) temperature is at 100 degrees or higher.**

- Students will enter one at a time or with siblings to maintain social distancing guidelines.
 - Non-homeroom teachers/staff and Administration will assist with morning carpool procedures.
 - PreK-3rd grades will be dropped off at the lower carpool lanes. (near the gym) Using both lanes, there will be staff to guide you.
 - 4th-8th grades will be dropped off at the upper carpool lane. (behind the parish offices). There will be staff to guide you.
 - Families that have students in both grade levels will drop off all of their children with the youngest child in family.
- Afternoon Dismissal
 - Dismissal will begin at 3:15 pm.
 - Homeroom teachers/staff and Administration will assist with afternoon carpool procedures.
 - Students will be picked up in the same carpool area as dropped off in the mornings.
 - Students will be dismissed by homerooms via PA system/Walkie talkies.
 - Students/Staff will adhere to the distancing guidelines for dismissal while waiting to be escorted to their cars.
 - Student may not be picked up in the front of the school or through the main school doors. Parents must stay in their cars and adhere to the drive through carpool protocol per school handbook.
 - ALL parents must drive through to pick their children up. No parking and walking up to the school/pick-up areas. It is imperative that social distancing/contact remain limited and at the very minimal during these times.
 - Student's masks must remain on until they are in their car.
- Classrooms
 - Each classroom will be designed to ensure the best physical distancing and minimums of 36 ft.² for each student.
 - Each desk will have a clear/plastic three way guard shield.
 - Masks are to be worn by all students, staff, personnel and visitors while inside the building.
 - Face shields for instructional purposes in certain classrooms/grades, may be considered and worn for the purpose of students/staff having the ability to see the instructor's mouth movement. (phonics, language therapy, etc..)

- Weather permitting; windows will be open for fresh air circulation.
- Hallway/Common Areas
 - Signage will be posted to ensure proper spacing and flow of traffic.
 - All social distancing protocols will be followed.
 - Masks will be required in all areas of the school.
 - Scheduled passing times/restroom times to limit the amount of students/staff in the hallway.

- Recess
 - PreK-K will use the small playground by the primary building only.
 - 1-8 Grade will use the back playground/field/blacktop area by the gym.
 - ONLY 1-3 grades will be allowed to use the “jungle gym” playground area.
 - 4-8 grades will use the field and blacktop/concrete area.
 - Recess times will be scheduled for each grade level and students will be limited to restricted areas.

- Cafeteria
 - E & E will continue to provide our lunches. Hot lunches will be served. There could be possible pre-orders for this as logistics are still in the works.
 - Students may also bring lunches from home.
 - Microwave ovens will not be available. Please bring food already warmed in thermoses and include eating utensils.
 - PreK and Kindergarten will eat lunch in their classrooms.
 - ○ An additional lunch period has been added to limit the numbers in the café:
 - 11:15-11:45 am 1-3 grade
 - 11:55-12:25 pm 4-5 grades
 - 12:30-1:00pm 6-8 grades ○ To reduce the amount of students in the cafeteria even more, after 20 minutes of lunch, those students who are finished will be able to go outside for additional fresh air the last 10 minutes of the lunch period. Students in specific grades will have a designated spot and will have supervision until homeroom teacher picks them up. This will give our students extra time outside and will reduce the amount of students in the cafeteria that do not need to be in there any longer. Giving custodial staff more time for cleaning and sanitizing/preparing for the next lunch period.

- In the case of inclement weather, students will remain the cafeteria in their assigned seating area.
- Washing hands before and after lunch period will be required.
- Students should not share food or drinks at any time.
- Students will no longer be “helpers” in the cafeteria after lunch periods.
- There will be limited movement in the cafeteria during the lunch periods.
 - Students will need to raise hand if they need an item or use the restroom.
 - Students will only be allowed to go through the line once.
 - Staff members on duty will move from table to table to dispose of all trash, so students will remain seated in their area the entire time.
- ALL TABLES/BENCHES WILL BE SANITIZED AND CLEANED PRIOR TO AND AFTER EACH LUNCH PERIOD.
- Outside eating areas with social distancing will be available; weather permitting.

General Information

Masses

- Grade 1-8 will attend weekly Mass. Per social distancing/spacing guidelines beginning after Labor Day.
- Kindergarten will begin attending Mass in October.
- PreK will begin attending Mass in January of 2021.
- All grade levels will have assigned section seating.
- No prayer partner seating.
- No student choir. The music director will lead music.
- Limited or no student reader per Father’s directives.
- Limited or no EM’s per Father’s directives.
- Staff/Student body is within social distancing guidelines and occupancy guidelines set by the Diocese.
- Live stream Mass will occur should the church close due to county/Diocesan orders.
- It is suggested that all visitors/parents not attend Mass on school Mass days.
- All church community members must wear a mask to Mass.

Fall Sports

- There are no fall sports per the DPL/Dallas Diocese.

Tutoring

- Tutoring will be available per teacher or parent request.

Extra-Curricular Activities

- No after school/lunch clubs will be available until further notice
- Music Learning Band
 - More information on this will be addressed once a final plan is submitted by the Music Learning Company.

After Care (YMCA)

- After care will be offered by the YMCA. More information on this will be addressed once a final plan is submitted by the YMCA.
- After care will begin on the first day of school.

Water Fountains

- Water fountains will be turned off – only the water bottle filling station on the water fountains will be working.
- All students should bring their own water bottles to school with names permanently on them.

Volunteers/Visitors

- Visitors on campus will be restricted to essential visitors only that are part of school operations or educational plans for students.
- Parents/family members will not be able to enter the building during school hours for any circumstance.
- Items that are forgotten cannot be dropped off at school.
- Lunches cannot be dropped off at school during the day.
- Volunteers will not be permitted during school hours, including the lunch periods.
- All volunteer opportunities will be limited to off campus/virtual meetings/activities.
- If a child should need to leave school early, it is suggested that the school office and the teacher be notified prior. Once the parent arrives at the school, the parent will call the front office. The student will then be released from class and escorted to the front doors by the office personnel.
- If a child becomes sick and needs to go home early. The nurse will contact the parent. The parent will be expected to report to the school as soon as possible. Once arrived, the parent will come to the front entrance and the child will be escorted from the clinic by the nurse to the parent at the front door.

Treats/Birthday

- Until further notice, no treats, cupcakes/cookies, birthday bags, etc... will be permitted on campus.

Back to School/Orientations/First Day of School Information

- Back to School Night/Meet the Teacher will be scheduled and communicated in a separate email once details have been finalized.
- Orientation for new families and students will also be scheduled and communicated in a separate email and could possibly be a virtual session to eliminate another travel to campus.

First Day of School procedures

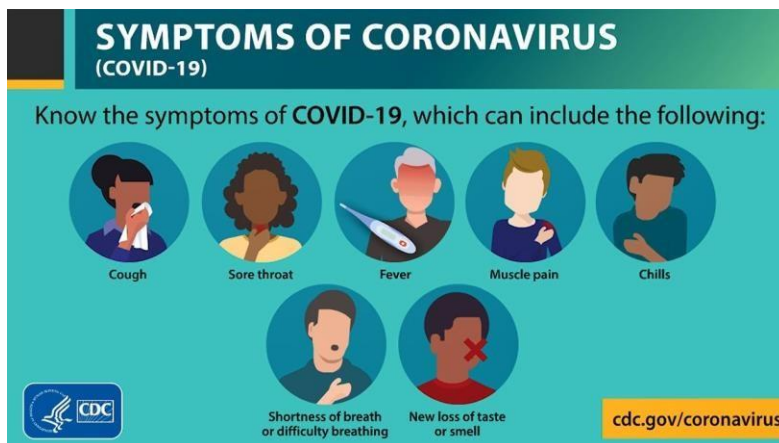
The following groups will be permitted on campus the first day of school:

- Only Pre-K and Kinder parents will be permitted to walk their child to class on the first day of school. Parents will also be required a temperature check and masks.
- NEW students/families of other grade levels will be permitted to walk their child to class on the first day of school. New parents will be given a “pass” and specific directions prior to the first day that will permit them into the building. Temperature checks and masks will be required for all entering.
- All other returning students will be expected to be dropped off at the appropriate carpool area for temperature checks and admittance into the building.

Positive Cases and Teachers, Staff, or Students showing COVID-19 Symptoms

- Temperature checks will be conducted, any individual with a fever over 100 degrees will be excluded from any in-person activities
- If the individual has a diagnosis from their doctor regarding the illness that is NOT COVID-19, he/she may return to work/ school if at least 3 days fever free, without the use of fever reducing medications
- If there is not a diagnosis or the diagnosis is uncertain, in addition to the lack of fever, the following conditions must be met before returning to work/ school: ○ Improvement in respiratory symptoms (cough, shortness of breath) ○ At least 10 days have passed since symptoms first appeared
- In the case an individual testing positive for COVID-19 and can be determined to have exposed the school to the same, the school will move the people the individual has been in contact with for more than a five to ten minute period to a virtual learning or working environment for a ten-day period.
- Any testing for COVID-19 should be delayed until five days after the initial exposure, and following the ten-day period, all individuals would be allowed back on campus provided they do not display any symptoms. Individuals will not need to provide a negative test to be allowed back on campus.
- If it is not possible to definitively know who the individual has been in contact with, the school will presume that maximum exposure has taken place and move anyone who could have come into contact with the individual to virtual learning or working, up to and including the entire school
- In all cases, the goal will be to limit disruption to the greatest extent possible while erring on the side of being overly cautious.

Symptoms of COVID-19



July2020/TS